

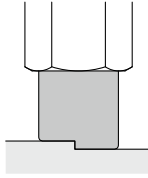
Sponge Pad

Symbol/Form

S: Sponge

Pad diameter $\varnothing 4, \varnothing 6, \varnothing 8, \varnothing 10, \varnothing 15$

■ For the adsorption of workpieces with bumps



Mounting Bracket Part Nos.

Adapter Assembly p. 293

How to Order

Pad unit ZP2-SGE

* Pad unit's sales unit: 10 pcs.



1 Pad O.D.

Symbol	Pad O.D.
04	$\varnothing 4$
06	$\varnothing 6$
08	$\varnothing 8$
10	$\varnothing 10$
15	$\varnothing 15$

2 Double-sided tape

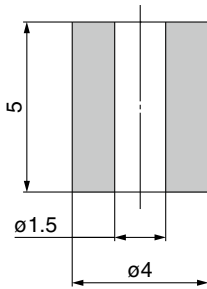
Symbol	Double-sided tape
Nil	None
D	With double-sided tape

3 Pad material

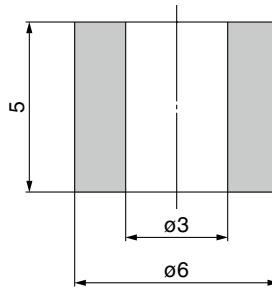
Symbol	Material
GE	Conductive EPDM sponge

Dimensions: Pad Unit

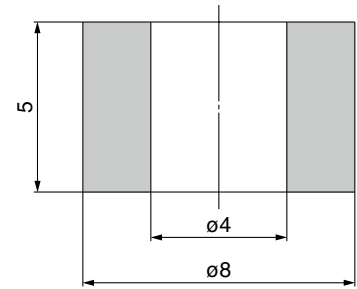
ZP2-04S□GE



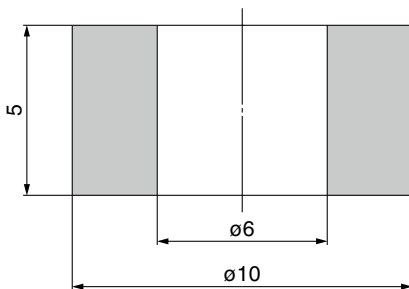
ZP2-06S□GE



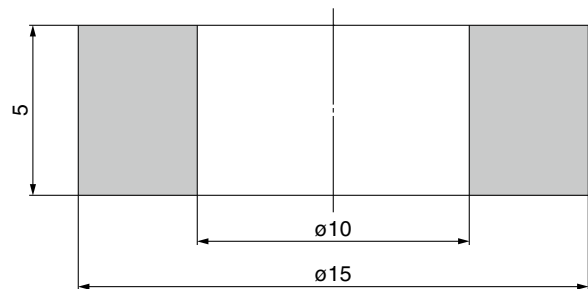
ZP2-08S□GE



ZP2-10S□GE



ZP2-15S□GE



Model Selection

For Special Applications

Mark-free

For Film Adsorption

Multistage

Flat

Nozzle

Sponge

For Disk Adsorption

For Panel Holding

Ball Spine Buffer

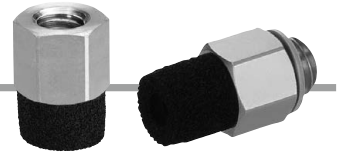
Construction

Mounting Bracket Assembly

Precautions

Sponge Pad **ZP2 Series**

How to Order



With adapter **ZP2** - **T** **S** **GE** -

1
2
3
4
5

•Sponge

1 Vacuum inlet direction

Symbol	Direction
T	Vertical

2 Pad O.D.

Symbol	Pad O.D.
04	ø4
06	ø6
08	ø8
10	ø10
15	ø15

3 Double-sided tape

Symbol	Double-sided tape
Nil	None
D	With double-sided tape

4 Pad material

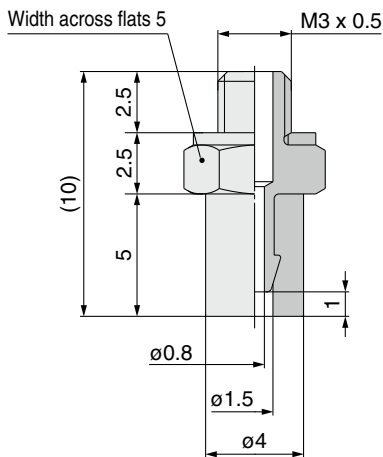
Symbol	Material
GE	Conductive EPDM sponge

5 Connection thread

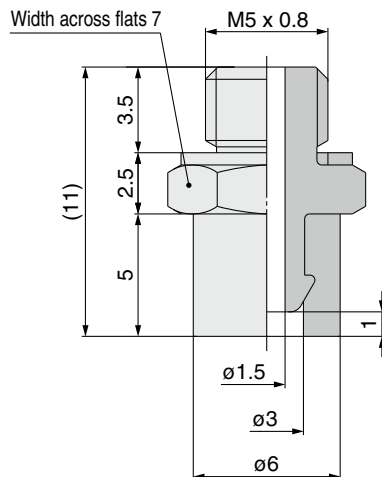
Symbol	Thread size	Applicable pad O.D. symbol				
		ø04	ø06	ø08	ø10	ø15
A3	M3 x 0.5 (Male thread)	●	—	—	—	—
A5	M5 x 0.8 (Male thread)	—	●	●	●	●
B3	M3 x 0.5 (Female thread)	●	—	—	—	—
B5	M5 x 0.8 (Female thread)	—	●	●	●	●

Dimensions: With Adapter

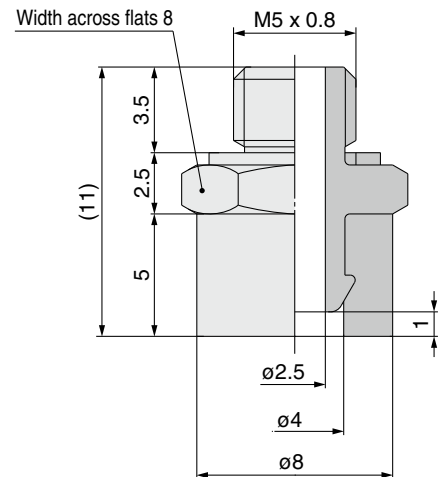
ZP2-T04SGE-A3



ZP2-T06SGE-A5

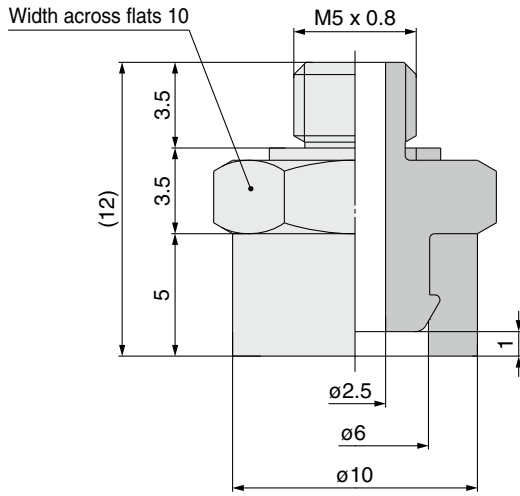


ZP2-T08SGE-A5

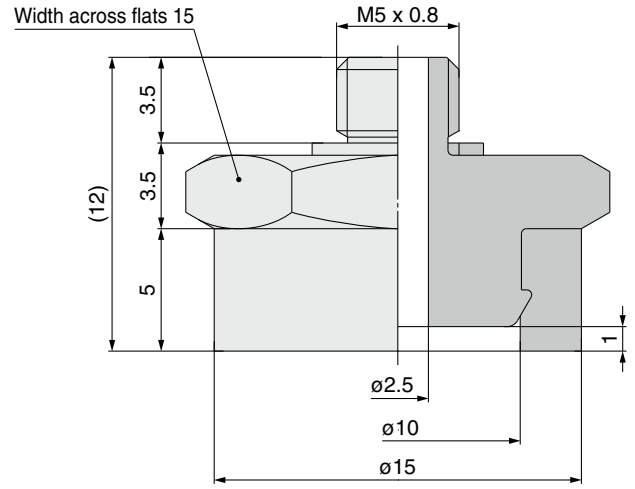


Dimensions: With Adapter

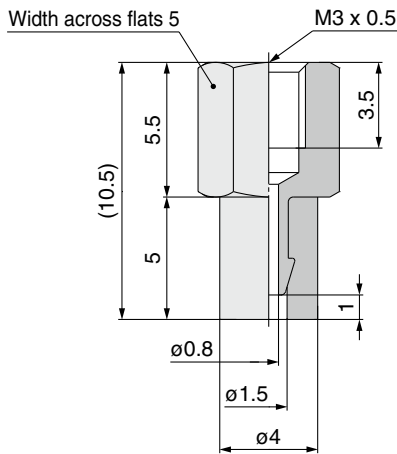
ZP2-T10S□GE-A5



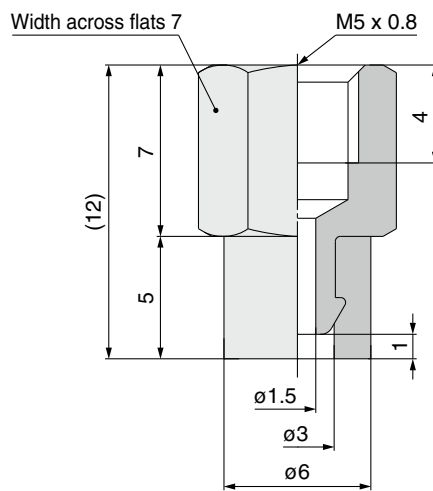
ZP2-T15S□GE-A5



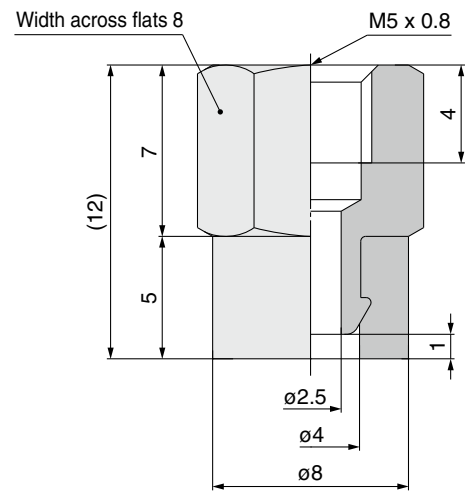
ZP2-T04S□GE-B3



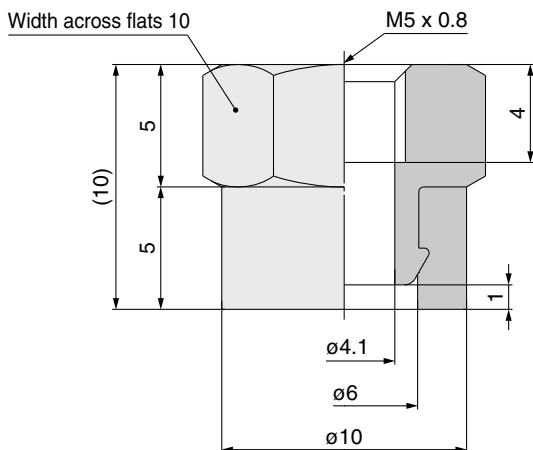
ZP2-T06S□GE-B5



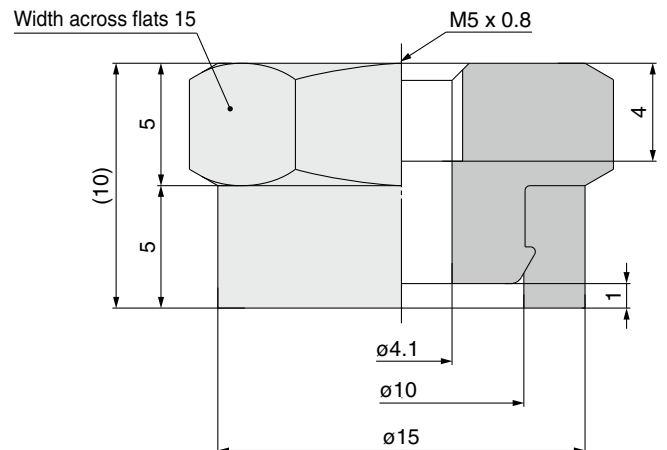
ZP2-T08S□GE-B5



ZP2-T10S□GE-B5



ZP2-T15S□GE-B5



Model Selection

For Special Applications

Mark-free

For Film Adsorption

Multistage

Flat

Nozzle

Sponge

For Disk Adsorption

For Panel Holding

Ball Spine Buffer

Construction

Mounting Bracket Assembly

Precautions

Sponge Pad *ZP2 Series* Mounting Bracket Assembly

Adapter Assembly

Product part no.	<p>ZP2 - T ① S □ GE - ②</p> <p>Pad diameter Sponge Pad material Connection thread (Male/Female thread)</p> <p>Double-sided tape</p>
Component parts	<div style="display: flex; justify-content: space-around;"> <div style="text-align: center;"> <p>Male thread</p> <p>Ⓐ Adapter (With gasket) Ⓑ Gasket</p> </div> <div style="text-align: center;"> <p>Female thread</p> <p>Ⓐ Adapter</p> </div> </div>

		Symbol	① Pad diameter symbol						
			04	06	08	10	15		
Ⓐ Adapter	② Connection thread	Male thread	M3 x 0.5	A3	ZP2A-S01P	—			
		M5 x 0.8	A5	—	ZP2A-S02P	ZP2A-S03P	ZP2A-S04P	ZP2A-S05P	
	Female thread	M3 x 0.5	B3	ZP2A-S11	—				
		M5 x 0.8	B5	—	ZP2A-S12	ZP2A-S13	ZP2A-S14	ZP2A-S15	
Ⓑ Gasket (Single unit)		10 pcs.*1	M-3G2	ZP-5G2					
		100 pcs.*1		M-5G2					

*1 The gasket (single unit) sales unit is shown.

⚠ Sponge Pad/Specific Product Precautions

- Be sure to read this before handling the products.
- Refer to page 375 for safety instructions. For vacuum equipment and vacuum pad precautions, refer to pages 376 to 379.

Mounting

⚠ Caution

1. Attach the sponge pad with double-sided tape on the back after the adapter assembly mounting surface has been degreased and allowed to air dry.